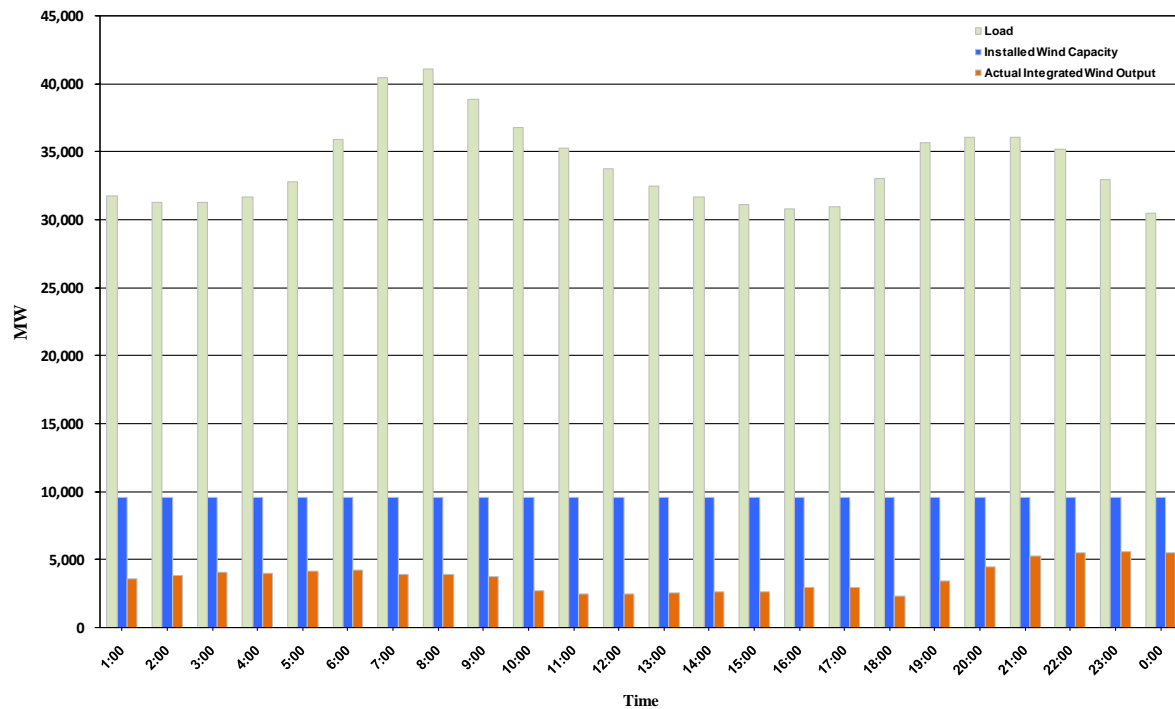




## ERCOT Grid Operations Wind Integration Report: 12/01/10

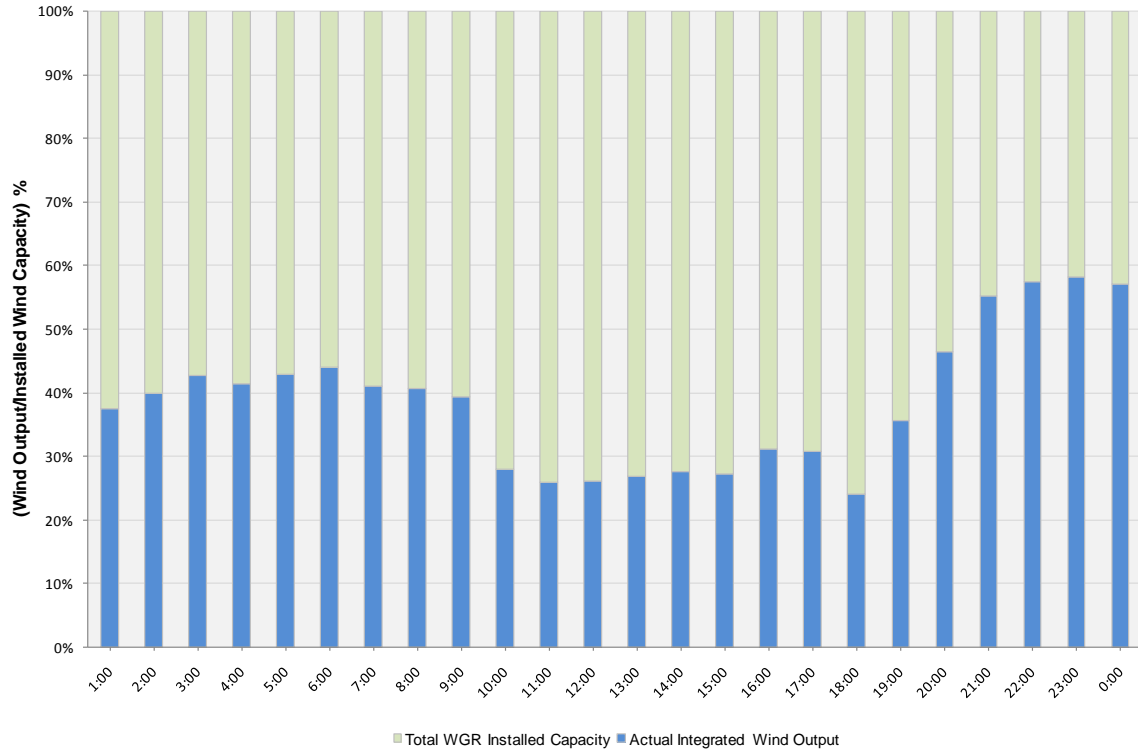
Peak Load	<b>41,060 MW</b>
Load Peak Hour	<b>08</b>
Wind Record 06/12/10	<b>7016 MW</b>
Max Wind value	<b>5763 MW</b>
Wind Peak Hour	<b>22:23:00</b>
Wind Integration %	<b>17.48</b>

Hourly Average Actual Load vs. Actual Wind Output  
12-01-2010

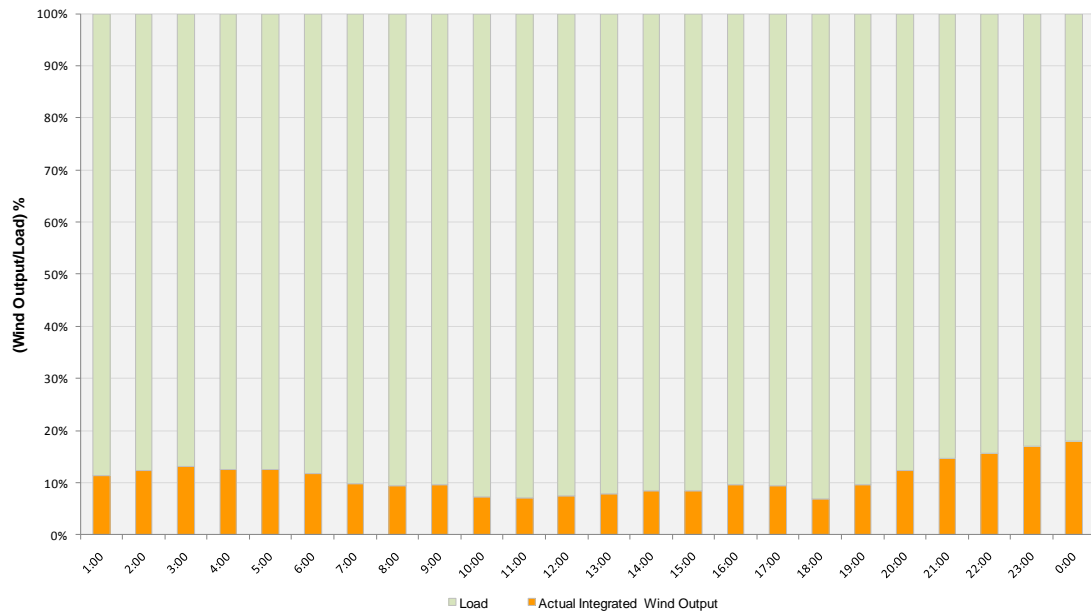




**Actual Wind Output as a Percentage of the Total Installed Wind Capacity**  
**12-01-2010**



**Actual Wind Output as a Percentage of the ERCOT Load**  
**12-01-2010**





**ERCOT Load vs. Actual Wind Output 11/24/10 - 12/01/10**

